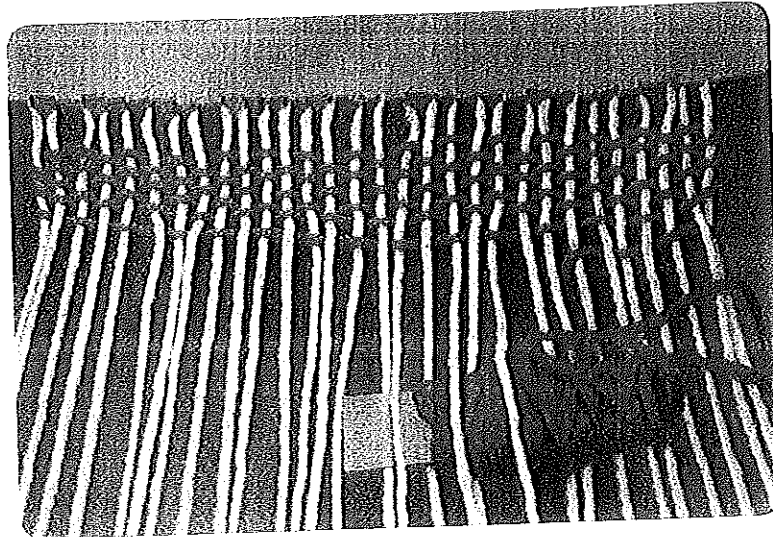


CEREAL BOX WEAVING LOOM



Making the Cereal Box Weaving Loom incorporates and utilizes: fine motor skills, hand-eye coordination, measurement, planning, symmetry

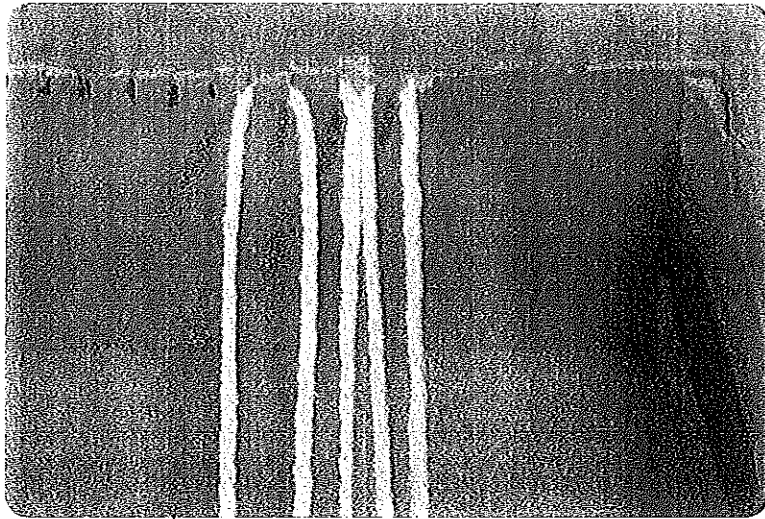
Playing with the Cereal Box Weaving Loom utilizes: counting, creativity, decision making, dexterity, fine motor skills, hand-eye coordination, patience, pattern recognition, sense of self, sequencing

Supplies:

- Cereal box
- String
- Yarn and/or ribbons of different colors and types
- Ruler
- Scissors
- Tape

To Make:

- Using the cereal box's original three-dimensional shape, glue or tape both ends.
- Remove the front of box.
- In the opening of the long panels, measure and mark 2 in (5.1 cm) from each corner. From these 2-in (5.1-cm) markings, measure and mark every 0.25 in (0.6 cm).
- Cut 0.25-in (0.6-cm) slits at each mark.
- Create the **warp** or strings on the loom:
 - ▲ Tie a knot at one end of the string and tape it to the back of the box.
 - ▲ Insert the string into the first slit and extend it to the slit directly opposite.
 - ▲ Wrap the string behind the box and insert into the second slit. Extend the string across the opening to the slit directly opposite.



- Continue this process until all the slits have been filled.
 - ▲ Be mindful not to pull the string too tight across the box, which will cause the sides to pull in.
- After the last slit, tape the end of the string to the back of the box.

To Play:

Weave

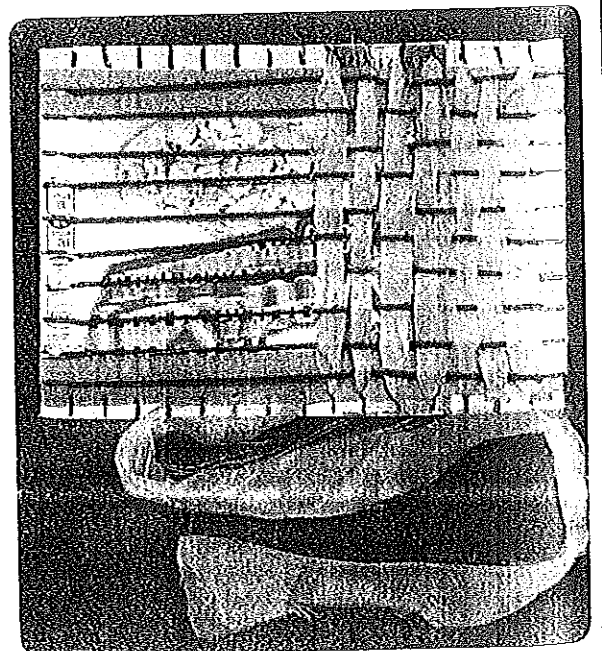
- Using colorful yarn as the **weft**, thread it over and under alternating strings of the warp. (The weft is perpendicular to the warp.)
- When one end is reached, pass the yarn under or over the last crosspiece and begin a new row, continuing the over and under pattern but opposite the previous row. After finishing a row, use fingers to push the weft up next to the previous row. In the event that the weaving material runs out or if a change in material is desired halfway through, new yarn can be tied onto the original piece and weaving can continue.
- Finish the edges of the woven piece.
 - ▲ Turn the box loom over, and cut each strand of the warp.
 - ▲ Starting on one end, gather the strands of the warp in groupings of two to four. As a grouping, tie a knot. Repeat with all the groupings.
 - ▲ Trim.

Suggestions:

- Use smaller looms, wider tabs, and fewer notches with younger weavers.
- Apply tape to the end of the yarn for easier handling while weaving.
- Make and use a **shuttle** for significantly long lengths of yarn.
 - ▲ To create a shuttle, cut a 1-in x 4-in (2.5-cm x 10.2-cm) rectangle from the leftover tagboard.
 - ▲ In one end, make a 1-inch (2.5-cm) cut.
 - ▲ Insert one end of the yarn through the slit, and wrap the yarn around the shuttle.
 - ▲ As the shuttle moves over/under each strand of the warp, unravel the yarn from the shuttle.

Variation:

1. Use a cracker or granola bar box to create a weaving board.
 - ▲ Remove both end tabs of the box and flatten.
 - ▲ Along all four sides, measure and mark every 0.5 in (1.3 cm).
 - ▲ At each marking, cut a 0.5-in (1.3-cm) slit.



- Create the warp or strings on the board.
 - ▲ Knot one end of the string. Insert the string in the first slit with the knot on the outside.
 - ▲ Extend the string to the slit directly across to the other side and insert it through the opposite slit.
 - ▲ Then take the string, wrap it behind the tab, and bring it through the neighboring slit.
 - ▲ Once again, bring the string across the open part of the box and into the opposite slit, around the tab, and through the neighboring slit. Continue this pattern until all slits are filled.
 - ▲ Once all slits are filled, tape the string tightly outside the last slit so that it doesn't fall back through to the inside.

- Weave
 - ▲ Knot one end of a colorful yarn. Insert the yarn in the first slit that runs perpendicular to the warp. The knot is on the outside. Thread the ribbon over and under alternating strings of the warp.
 - ▲ When the end is reached, pass the ribbon behind the tab and bring it through the neighboring slit to begin a new row.
 - ▲ Continue weaving the ribbon in the over-and-under pattern but opposite that of the previous row.
 - ▲ After finishing a row, use fingers to push the weft up next to the previous row. In the event that the weaving material runs out or if a change in material is desired halfway through, new yarn or ribbon can be tied onto the original piece and weaving can continue.

- Finish the edges of the woven piece.
 - ▲ When the piece is finished, push the tabs forward and carefully remove it from the board.
 - ▲ Starting at one end, bring the second loop under and through the first loop, pulling to secure.

- Do not drop the second loop.
 - ▲ Now move to the third loop and do the same. Bring the third loop under and through the second loop, being careful not to drop the third loop. Continue this pattern around all four sides.
 - ▲ When the second-to-last loop has passed through the last loop, make several knots so that it cannot fall back through.
 - ▲ Repeat on the opposite side of the project.